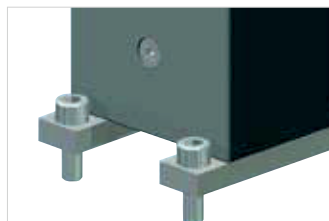
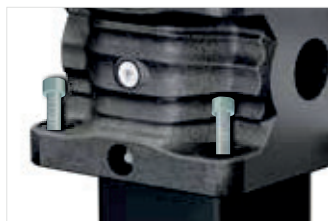




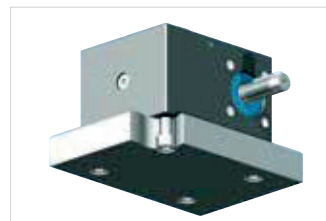
Fixing

Fixing – fixed



Fixing strips (for the GSZ series):
Top mounting fixing strips BFL are required for attaching GSZ gearboxes from above.

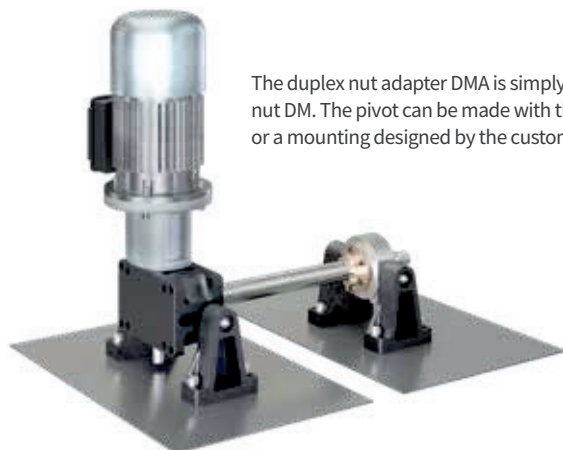
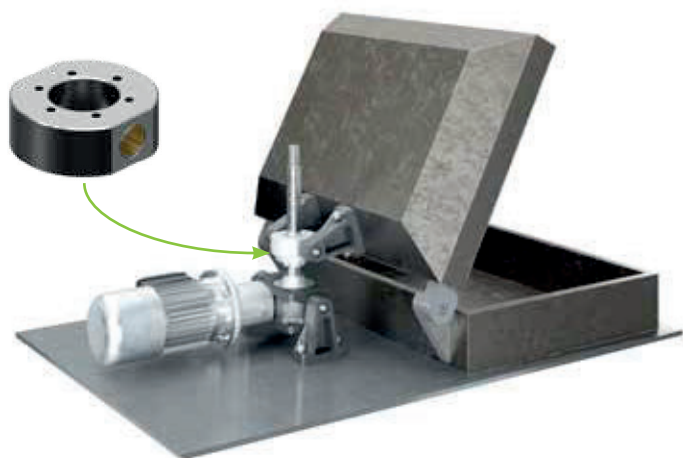
Through the mounting plate:



Blind tapped holes (ZE- and GSZ-Series):
Z and GSZ series can be attached from underneath using the blind tapped holes in the gearbox. ZE size 5 to 25, GSZ-Series: all sizes

Fixing - pivoting

Duplex nut adapter DMA



The duplex nut adapter DMA is simply bolted to the duplex nut DM. The pivot can be made with the pivot mounts LB or a mounting designed by the customer.

Pivoting support tube STRO



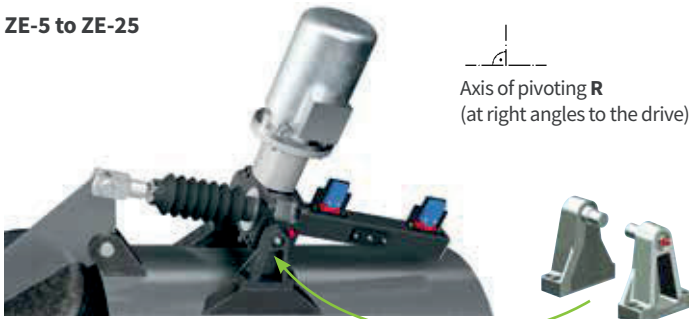
The **pivoting support tube STRO** has the advantage that the pivot points are entirely external. The disadvantage is that the gearbox and motor weights are in the centre. The manufacture is always customer-specific.



Fixing

Fixing – pivoting

ZE-5 to ZE-25

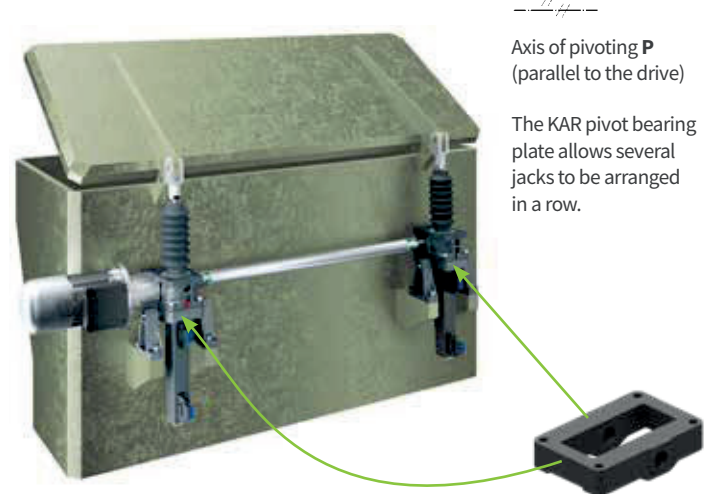


Axis of pivoting **R**
(at right angles to the drive)

Integrated pivot bearing

Simple and economical design: Pivot bushes are incorporated in the gearbox housing and PTFE-coated and therefore require no lubrication in normal service.

Pivot bearing plate KAR



Axis of pivoting **P**
(parallel to the drive)

The KAR pivot bearing plate allows several jacks to be arranged in a row.

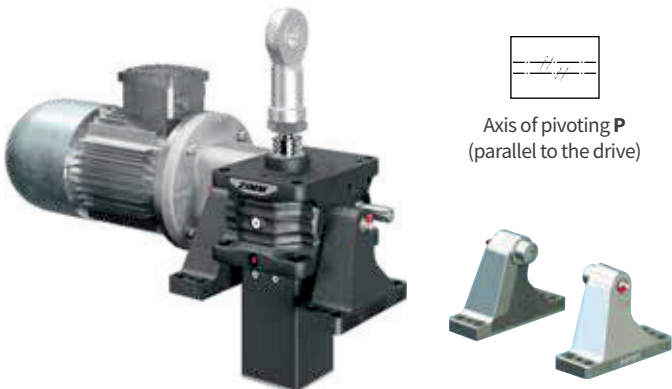
With pivot bearing plate KAR

For large motors, long strokes and high load cycles, the variant with the pivot bearing plate KAR is preferable, because the weight of the motor is then taken by the bearing points and does not affect the screw.

Pivot mounts design for ZE-35 to ZE 200 and Z-250 to Z-1000

Integrated pivot bearing

Simple and economical design: Pivot bushes are incorporated in the gearbox housing.



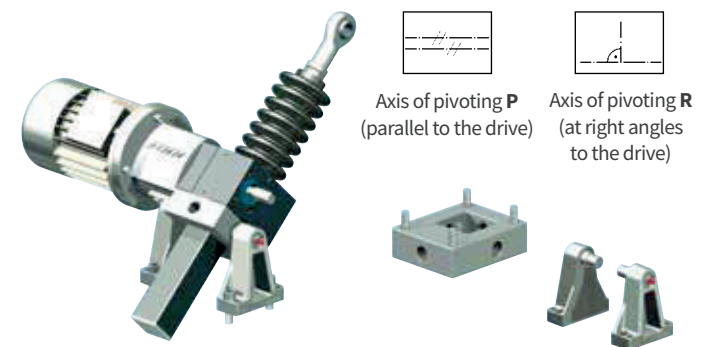
Axis of pivoting **P**
(parallel to the drive)

GSZ-2 to GSZ-150

with pivot bearing plate KAR

For GSZ gearboxes, a pivot bearing plate can be mounted on face E (above) or F (underneath).

In each case there are 4 holes available for the pivot plate P or R.



Axis of pivoting **P**
(parallel to the drive)

Axis of pivoting **R**
(at right angles to the drive)

Pivot bearing plate KAR on request