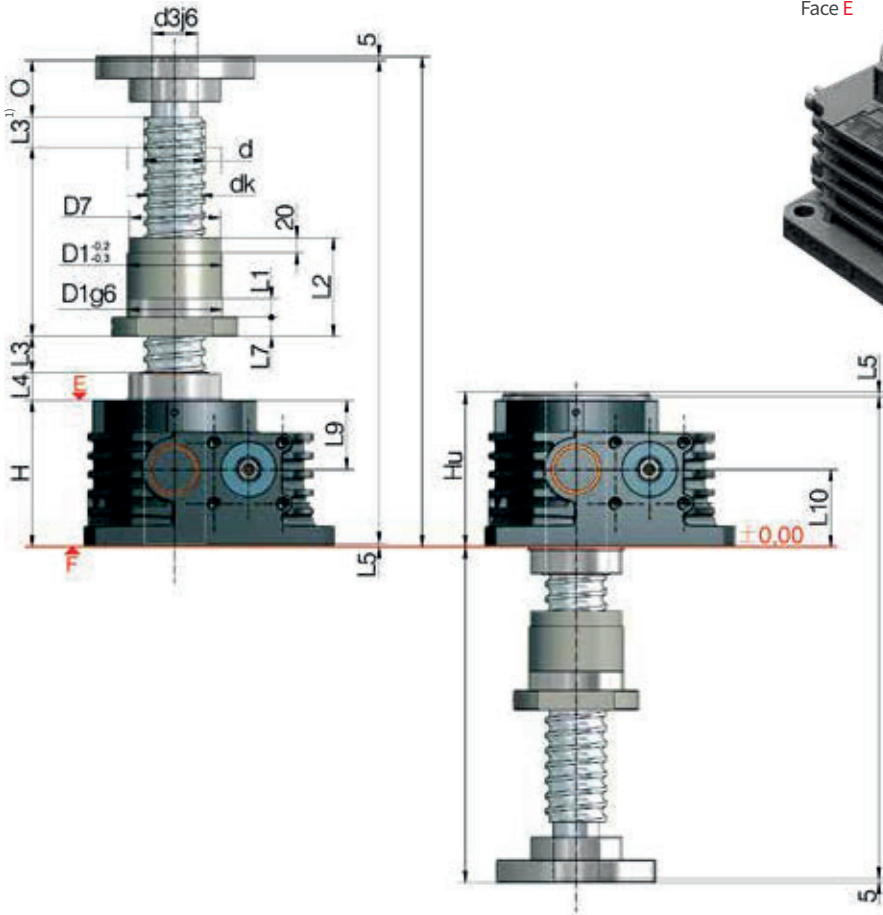
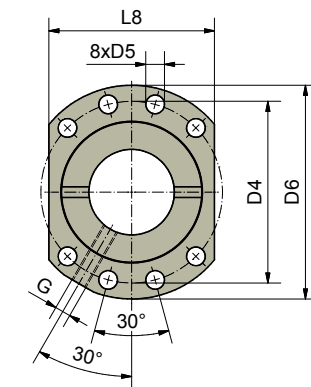


KGT **R** **250 to 350 kN**
KGT-R | rotating screw



Position of the flanged nut:
 G = flange gearbox side (as shown)
 S = flange screw side



Hole pattern 2 to DIN 69051

Screw jacks	KGT Screw ØxP	Stroke per drive revolution		KGT Load rating kN		Nut		Lubrication hole G	Axial play max ⁹⁾ mm
		RN	RL	dyn. C ²⁾	stat. C ₀ =C _{0a}	Type	Hole pattern		
ZE-250	80x10 ⁴⁾	0,94	0,31	193	993,4	E	2	M8x1	0,03
	80x20	1,87	0,63	359,2	942,5	E	2	M8x1	0,03
	80x40	3,75	1,25	251,2	565,5	E	2	M8x1	0,03
	80x60	5,62	1,88	189,1	377	E	2	M8x1	0,03
ZE-350	100x20	1,87	0,63	330,2	979,1	E	2	M8x1	0,03
	100x40	3,75	1,25	270	734	E	2	M8x1	0,03
	100x60	5,62	1,88	203	489,6	E	2	M8x1	0,03
	100x80	7,50	2,50	203	489,6	E	2	M8x1	0,03



Screw jacks	KGT Screw								Dimensions mm												
	ØxP	d	dk	d3j6	O	H	Hu	D1	D4	D5	D6	D7	L1	L2	L3 ¹⁾	L4	L5	L7	L8	L9	L10
ZE-250	80x10 ⁴⁾	80	73,6	60	75	193	204	105	125	13,5	145	-	16	160	20	37	5	20	110	91	102
	80x20	80	67	60	75	193	204	125	145	13,5	165	120	25	190	40	37	5	25	130	91	102
	80x40	80	67	60	75	193	204	125	145	13,5	165	120	25	190	80	37	5	25	130	91	102
	80x60	80	67	60	75	193	204	125	145	13,5	165	120	25	190	120	37	5	25	130	91	102
ZE-350	100x20	100	87,4	80	100	230	230	150	176	17,5	202	145	25	175	40	24	6	30	155	115	115
	100x40	100	87,4	80	100	230	230	150	176	17,5	202	145	25	175	80	24	6	30	155	115	115
	100x60	100	87,4	80	100	230	230	150	176	17,5	202	145	25	175	120	24	6	30	155	115	115
	100x80	100	87,4	80	100	230	230	150	176	17,5	202	145	25	215	160	24	6	30	155	115	115

1) Depending on the control system and drive, the dimension L3 can be reduced at your own discretion. An extension may be required if a bellows or spiral spring is fitted.

2) Dynamic load rating to DIN ISO 3408

4) Non-preferred design

5) Screw Face F: L2 = 244, L6 = 202